

### Box contents:

- 1) Security Wi-Fi Camera \*1
- 2) Mounting bracket\*1
- 3) USB cable\*1
- 4) Wall screws\*3
- 5) Screw anchors\*3
- 6) User manual
- 7) Magnet base (Optional)

### Getting to know your device

#### Product Features:

- View live streaming video / security monitoring
- Records Video up to 1080P HD
- Camera view angle 110°
- Night Infrared for night time use and recording
- 2 way intercom function
- Built-in motion detector for sensor notifications and can set to record on motion
- Control this device and monitor via the Tycam APP
- Easily setup and install this WiFi camera in minutes

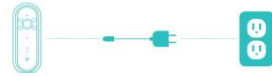
When network connected, press WiFi to enter AP mode. Reboot the device and it will connect to the WiFi hotspot automatically. If no WiFi, the mobile phone can connect the device and monitor in AP mode.

### LED indicator status

Status	Meaning
● (Red)	Flashes ON power on
● (Blue)	Flashes ON no network
● (Blue)	Flashes slowly device network connected
● (Blue)	Flashes quickly connecting network
●-●-● (Blue)	Flashes alternately device network connected and recording
●-●-● (Red)	Flashes alternately device network connected and user is watching
●-●-● (Red)	Flashes alternately device network connected and user is watching and recording
● (Red)	Flashes quickly firmware upgrade

### Initial set-up

1. Get power supply  
Plug the device into a power outlet. Device boots up.



### 2. Install APP

Search Tycam directly from the App Store or Google Play. Open the APP on your Android or iOS device.



### 3. Create account

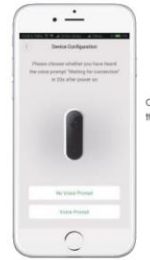
Register by Email and password. Validate your email and return to login.



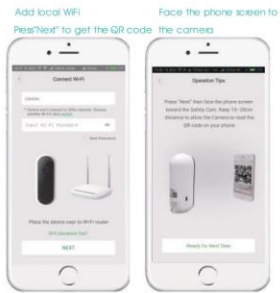
### 4. Add device



### Scan the QR code on device or box.



Click "voice prompt" and follow the APP hints to move forward.



### Installation

Put the device on a flat surface with the magnetic base (optional) or install it on the wall or the ceiling

#### Notice:

- a) Before installation, please make sure the device is close to the power socket.
- b) Before secure the pin and the screw please drill holes on flat and solid surface.

#### Wall mount installation

Remove the pin from wall mount

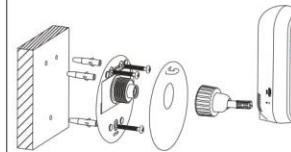


#### Drill holes

Drill holes on the wall according to the position of the pin holes

#### Secure the pin to the wall

Place 3 screw anchors into the holes, then secure the pin to the wall with the 3 screws.



### Specifications

Image sensor	1/2.7" color CMOS sensor
Image resolution	HD1080P(1920*1080), WVGA(854*480)
Camera lens	Aperture F1.8, 110° (JHD6) Aperture F2.2, 190° (JHD6P)
Video compression format	H.264
Wireless connection	WiFi(QEEE802.11b/g/n)
Memory	Micro SD card (Max. 32GB)
Video format	AVI
Mobile terminal	iOS/Android
Password type	WPA2-AES
Power input	5V/1A, USB interface
Net weight	65g
Dimensions	104.00*42.00*37.00mm



### User Manual

Wi-Fi Security Camera



Welcome home  
This guide will assist you to get a quick start and to learn the operation of the device effectively.

